

## WSMA High School State Honors Music Project 2021 Viola Audition Requirements

WSMA State Honors Music Project is a nationally-recognized program of excellence for musically accomplished Wisconsin students. Students apply in November, audition in February, are selected in March, attend a summer camp in June, and perform in October during the Wisconsin State Music Conference. By providing musically accomplished youth with the opportunity to rehearse and perform with nationally-known conductors in a professional setting, students bring back their new skills to share in their school music programs. State Honors students also form lifetime friendships with others who share their level of commitment to music.

### AUDITION ELIGIBILITY

Students in grades 9, 10 and 11 from WSMA-member schools are eligible to audition for the High School State Honors Music Project. WSMA recommends that students participate in a regularly scheduled music class. Student eligibility is determined at the school level by principal (or designated staff). All selected students must attend the summer camp and fall performance.

### SIGHT-READING

Each student will sight-read two excerpts during their audition. To prepare, practice 6/8 meter and syncopated rhythms in 4/4 meter.

### REQUIRED ETUDE

15 Etudes for Viola, Op.116, Hans Sitt, ed.Kunzelmann. Play No.5 ending on the first note of measure 49. (found on [imslp.org](http://imslp.org)).

### REQUIRED SOLO

Play a 3-minute excerpt of a current WSMA Class A solo - unaccompanied.

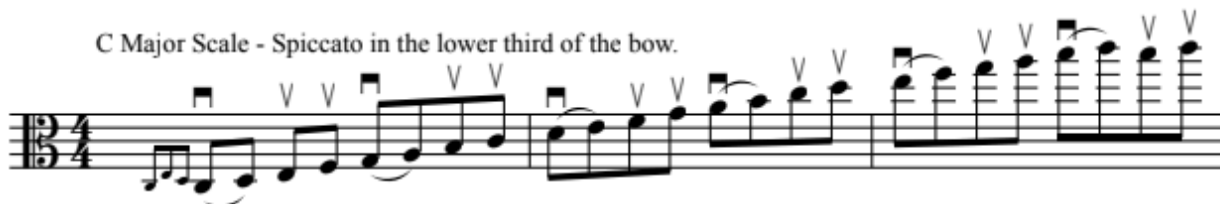
### SCALES

Perform from memory the scales listed on page two with the indicated bowings in three octaves when possible.

**Please Note:** The scales below are the required scales with the required bowings. Scales may be performed in any method that meets the correct scale and bowing requirements. The added notes at the beginning are intended as a suggestion to facilitate the bowing and not a requirement of the audition.

## Suggested Scale Pattern for Viola Auditions

C Major Scale - Spiccato in the lower third of the bow.



D Major Scale - Staccato in the middle of the bow.



E♭ Major Scale - Detaché



F Major Scale - Whole bow for each slur.



A♭ Major Scale - Spiccato in the lower third of the bow.

